

**Butler County General Health District COVID-19 Update (12/19/2020)**  
**Confirmed and Probable COVID-19 Cases Reported to Butler County\***  
 Butler County Residents, 2020

|                                     |                               |
|-------------------------------------|-------------------------------|
| <b>Total # of Cases (12/19):</b>    | <b>23,146*</b>                |
| <b>Confirmed Deaths (12/19):</b>    | <b>183</b>                    |
| <b>Hospitalizations (12/19):</b>    | <b>778</b>                    |
| <b>ICU admissions (12/19):</b>      | <b>83</b>                     |
| <b>First Case Reported:</b>         | 3/11/2020                     |
| <b>Last Case Reported (so far):</b> | 12/19/2020                    |
| <b>Confirmed Cases:</b>             | <b>22,446</b>                 |
| <b>Probable Cases:</b>              | <b>700</b>                    |
| <b>Age Range:</b>                   | <1-101                        |
| <b>Median Age:</b>                  | 40                            |
| <b>Mean Age:</b>                    | 41.3                          |
| <b>Incidence:</b>                   | 6,041.2 per 100,000           |
| <b>Prevalence (3/11-12/19):</b>     | <b>6.04% of BC population</b> |

**Table 1: Total Reported\* Cases by ZIP Code**

| ZIP Code  | Number of Cases | Change from previous week        | Rate per 10,000 | % of Confirmed Cases | Total deaths |
|---|-----------------|----------------------------------|-----------------|----------------------|--------------|
| 45011   | 3992            | ↑138 (3.6%) From 3854            | 572.9           | 20.9%                | 22           |
| 45013   | 3143            | ↑129 (4.3%) from 3014            | 597.4           | 16.4%                | 44           |
| 45014   | 2972            | ↑ 80 (2.8%) from 2892            | 676.7           | 15.5%                | 37           |
| 45044   | 2963            | ↑ 126 (4.4%) from 2837           | 560.9           | 15.5%                | 33           |
| 45069   | 2674            | ↑77 (3.0%) from 2597             | 545.0           | 14.0%                | 9            |
| 45056   | 2415            | ↓6 (0.2%) from 2421              | 893.2           | 12.6%                | 9            |
| 45042   | 1543            | ↑ 58 (3.9%) from 1485            | 583.3           | 8.1%                 | 7            |
| 45067   | 849             | ↑44 (5.5%) from 805              | 610.9           | 4.4%                 | 1            |
| 45050   | 669             | ↑31 ( 4.9%) from 638             | 782.6           | 3.5%                 | 5            |
| 45015   | 606             | ↑ 16(2.7%) from 590              | 503.4           | 3.2%                 | 10           |
| 45241   | 335             | ↓21 (5.9%) from 356              | -               | 1.8%                 | 2            |
| 45053   | 186             | ↑ 80 (75.5%) from 106            | 543.9           | 1.0%                 | -            |
| 45064   | 76              | ↑ 3 (4.1%) from 73               | -               | 0.4%                 | -            |
| 45246   | 42              | No Change (0%) from 42           | -               | 0.2%                 | -            |
| 45062   | 39              | ↑ 1 (2.6%) from 38               | -               | 0.2%                 | -            |
| Cases lacking zip code information or from zip codes with too few cases | 642             | -                                | -               | 2.8%                 | 4            |
| <b>Butler County (inclusive)</b>  | <b>23146</b>    | <b>↑ 1,455 (6.7%) from 21691</b> | <b>604.1</b>    | <b>100%</b>          | <b>183</b>   |

Zip-codes not calculated have most of their population outside of Butler County. Rate given for comparison by population and will be higher than the actual amount. Zip-codes with too few cases have been removed for privacy concerns.

All figures show reported cases of COVID-19 in Butler County as of 1700 EDT 12/19/2020. Due to delays in reporting, the numbers of confirmed and probable cases on all figures are subject to change between reports and confirmed and probable case counts are likely to increase. \*This should not be assumed to be the total disease burden of COVID-19 in Butler County only those that have been laboratory confirmed OR meet ODH probable case criteria AND reported to Public Health.

\*Data is provisional – only confirmed or probable COVID-19 cases are included in counts. Report reflects time period since the introduction of SARS-CoV-2 into humans, measured in days. Data accessed from the Ohio Disease Reporting System (ODRS) on 12/19/2020 at 1700 EST.

Figure 1. New Hospitalizations of Butler County Residents by Admission Date, 2020\*

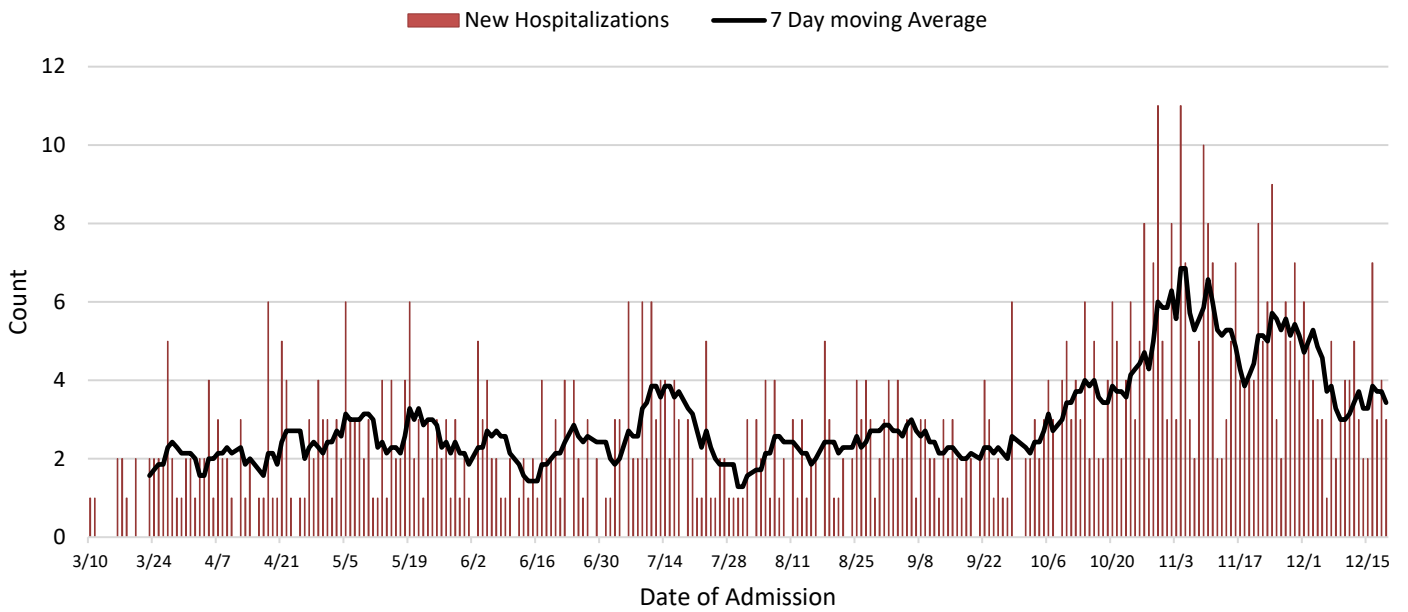
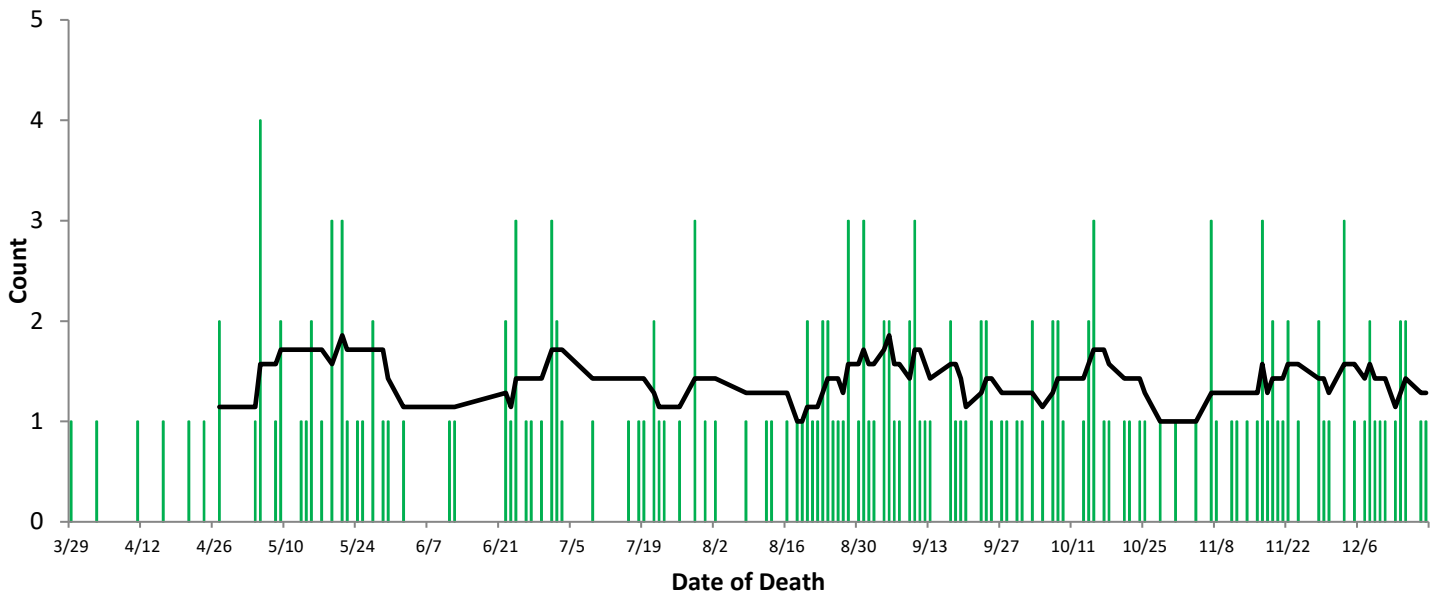


Figure 2. Confirmed COVID-19 Deaths by date of death, 2020\*



Deaths are only included if they are confirmed by case definition.

All figures show reported cases of COVID-19 in Butler County as of 1700 EDT 12/19/2020. Due to delays in reporting, the numbers of confirmed and probable cases on all figures are subject to change between reports and confirmed and probable case counts are likely to increase. \*This should not be assumed to be the total disease burden of COVID-19 in Butler County only those that have been laboratory confirmed OR meet ODH probable case criteria AND reported to Public Health.

\*Data is provisional – only confirmed or probable COVID-19 cases are included in counts. Report reflects time period since the introduction of SARS-CoV-2 into humans, measured in days. Data accessed from the Ohio Disease Reporting System (ODRS) on 12/19/2020 at 1700 EST.

**Table 2. New Reports by MMWR Week, 2020**

| MMWR Week | End of Week | New Cases Reported<br>(by date of report) | New Hospitalizations<br>(by date of report) | New Confirmed Deaths<br>(by date of death) |
|-----------|-------------|---|---|--|
| 11        | 3/14        | 6   | 1   | 0  |
| 12        | 3/21        | 10  | 3   | 0  |
| 13        | 3/28        | 11  | 6   | 0  |
| 14        | 4/4         | 44  | 18  | 2  |
| 15        | 4/11        | 50  | 16  | 1  |
| 16        | 4/18        | 43  | 10  | 1  |
| 17        | 4/25        | 55  | 19  | 2  |
| 18        | 5/2         | 99  | 16  | 2  |
| 19        | 5/9         | 131                                       | 18  | 8  |
| 20        | 5/16        | 134                                       | 17  | 4  |
| 21        | 5/23        | 184                                       | 26  | 8  |
| 22        | 5/30        | 111                                       | 12  | 6  |
| 23        | 6/6         | 113                                       | 16  | 1  |
| 24        | 6/13        | 89  | 10  | 2  |
| 25        | 6/20        | 115                                       | 13  | 0  |
| 26        | 6/27        | 167                                       | 19  | 8  |
| 27        | 7/4         | 198                                       | 10  | 7  |
| 28        | 7/11        | 285                                       | 18  | 1  |
| 29        | 7/18        | 260                                       | 26  | 2  |
| 30        | 7/25        | 270                                       | 12  | 5  |
| 31        | 8/1         | 275                                       | 9   | 5  |
| 32        | 8/8         | 242                                       | 17  | 2  |
| 33        | 8/15        | 264                                       | 13  | 2  |
| 34        | 8/22        | 265                                       | 14  | 8  |
| 35        | 8/29        | 546                                       | 24  | 10   |
| 36        | 9/5         | 774                                       | 13  | 10   |
| 37        | 9/12        | 498                                       | 18  | 9  |
| 38        | 9/19        | 368                                       | 17  | 5  |
| 39        | 9/26        | 381                                       | 13  | 6  |
| 40        | 10/3        | 508                                       | 10  | 6  |
| 41        | 10/10       | 590                                       | 16  | 5  |
| 42        | 10/17       | 686                                       | 29  | 7  |
| 43        | 10/24       | 770                                       | 24  | 4  |
| 44        | 10/31       | 912                                       | 42  | 3  |
| 45        | 11/7        | 1149                                      | 45  | 4  |
| 46        | 11/14       | 1538                                      | 31  | 4  |
| 47        | 11/21       | 1794                                      | 36  | 9  |
| 48        | 11/28       | 2069                                      | 45  | 5  |
| 49        | 12/05       | 2314                                      | 21  | 6  |
| 50        | 12/12       | 2698                                      | 25  | 6  |
| 51        | 12/19       | 2130                                      | 30  | 7  |

All figures show reported cases of COVID-19 in Butler County as of 1700 EDT 12/19/2020. Due to delays in reporting, the numbers of confirmed and probable cases on all figures are subject to change between reports and confirmed and probable case counts are likely to increase. \*This should not be assumed to be the total disease burden of COVID-19 in Butler County only those that have been laboratory confirmed OR meet ODH probable case criteria AND reported to Public Health.

\*Data is provisional – only confirmed or probable COVID-19 cases are included in counts. Report reflects time period since the introduction of SARS-CoV-2 into humans, measured in days. Data accessed from the Ohio Disease Reporting System (ODRS) on 12/19/2020 at 1700 EST.

Figure 3: Reported COVID-19 Cases in Butler County by Event Date

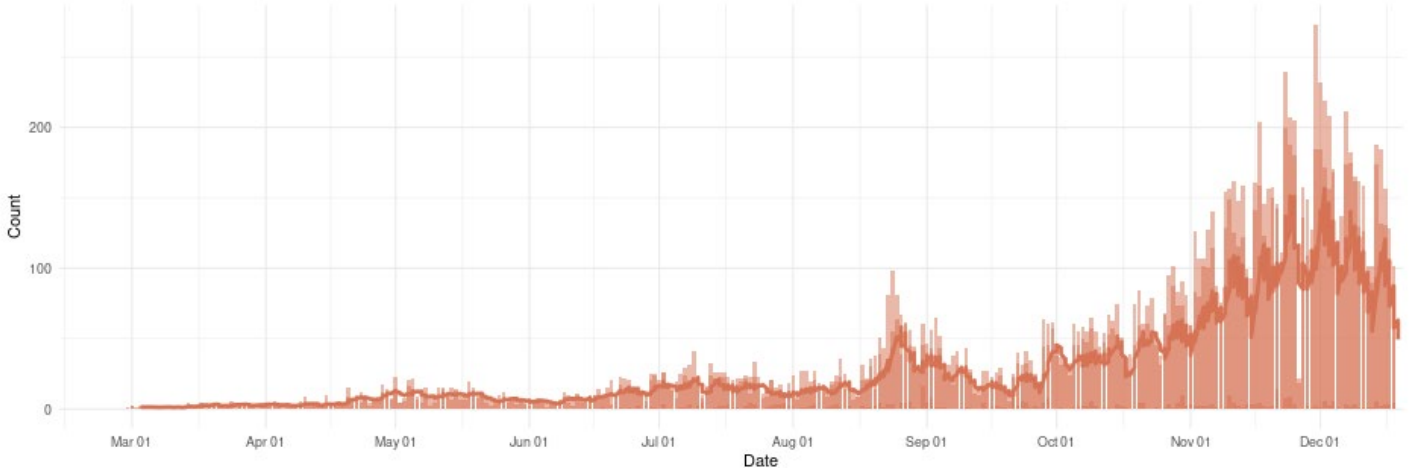
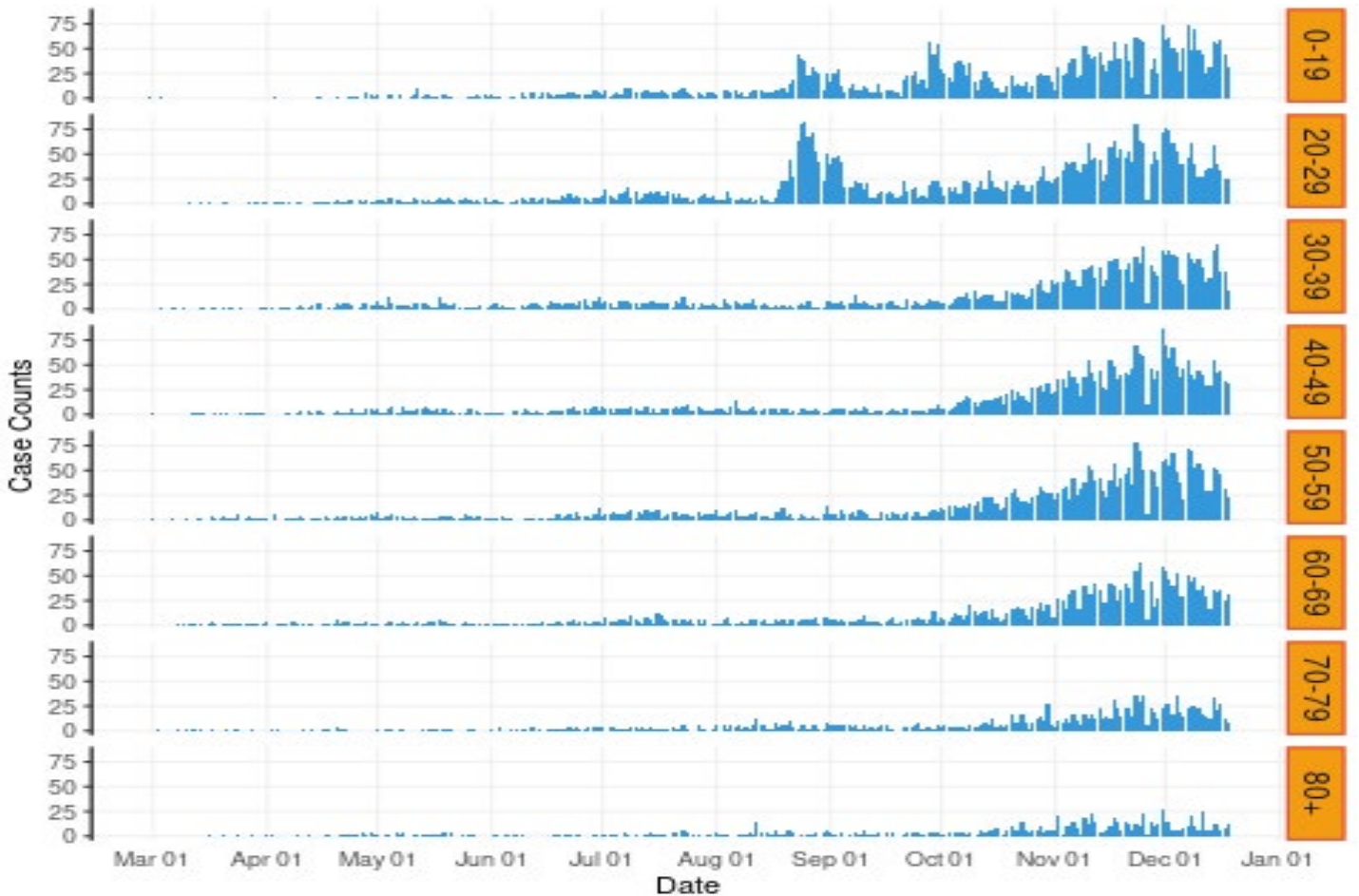


Figure 4: Reported COVID-19 Cases in Butler County by Age Group



Graphs sourced from <http://dataviz.miamioh.edu/COVID-OHIO/>

Data sourced from <https://coronavirus.ohio.gov/wps/portal/gov/covid-19/dashboards/overview/>

All figures show reported cases of COVID-19 in Butler County as of 1700 EDT 12/19/2020. Due to delays in reporting, the numbers of confirmed and probable cases on all figures are subject to change between reports and confirmed and probable case counts are likely to increase. \*This should not be assumed to be the total disease burden of COVID-19 in Butler County only those that have been laboratory confirmed OR meet ODH probable case criteria AND reported to Public Health.

\*Data is provisional – only confirmed or probable COVID-19 cases are included in counts. Report reflects time period since the introduction of SARS-CoV-2 into humans, measured in days. Data accessed from the Ohio Disease Reporting System (ODRS) on 12/19/2020 at 1700 EST.